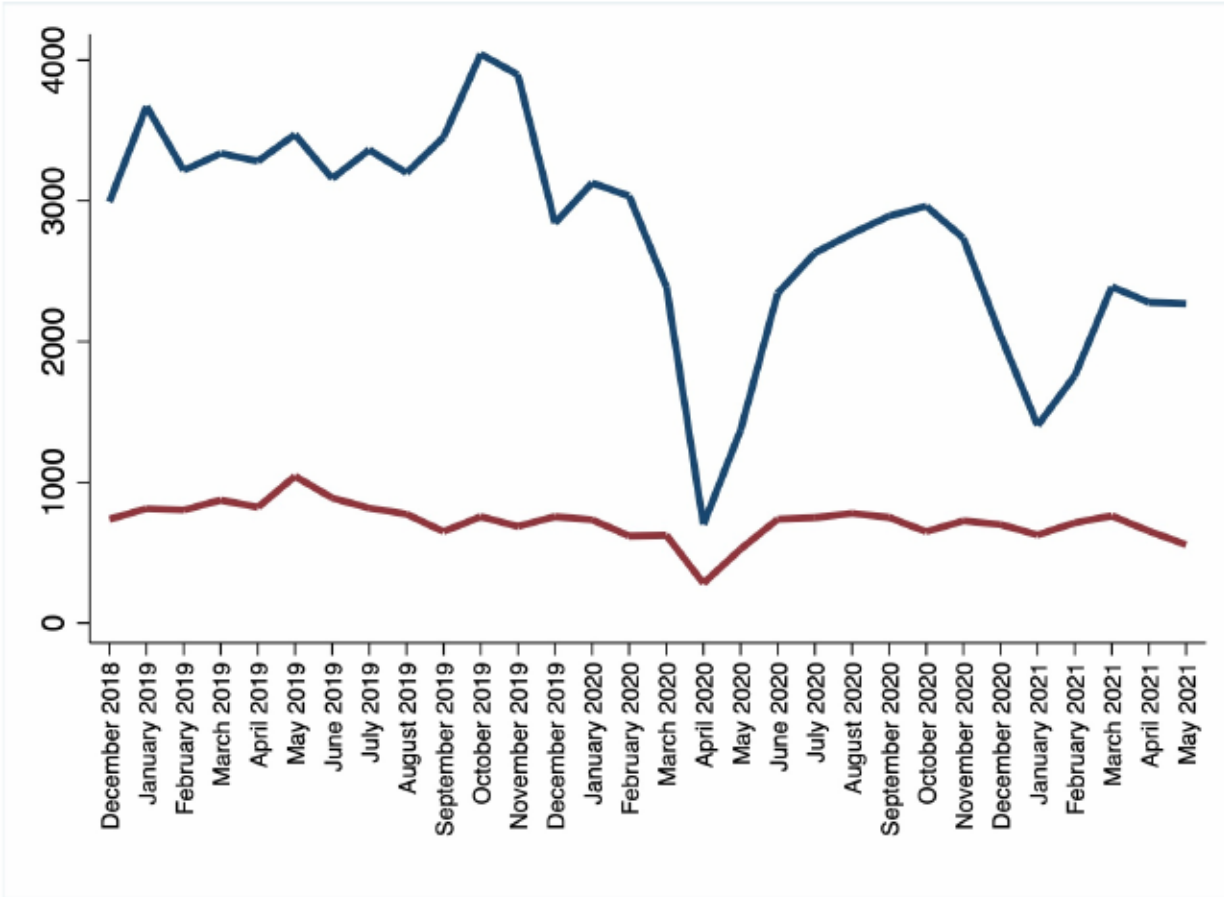
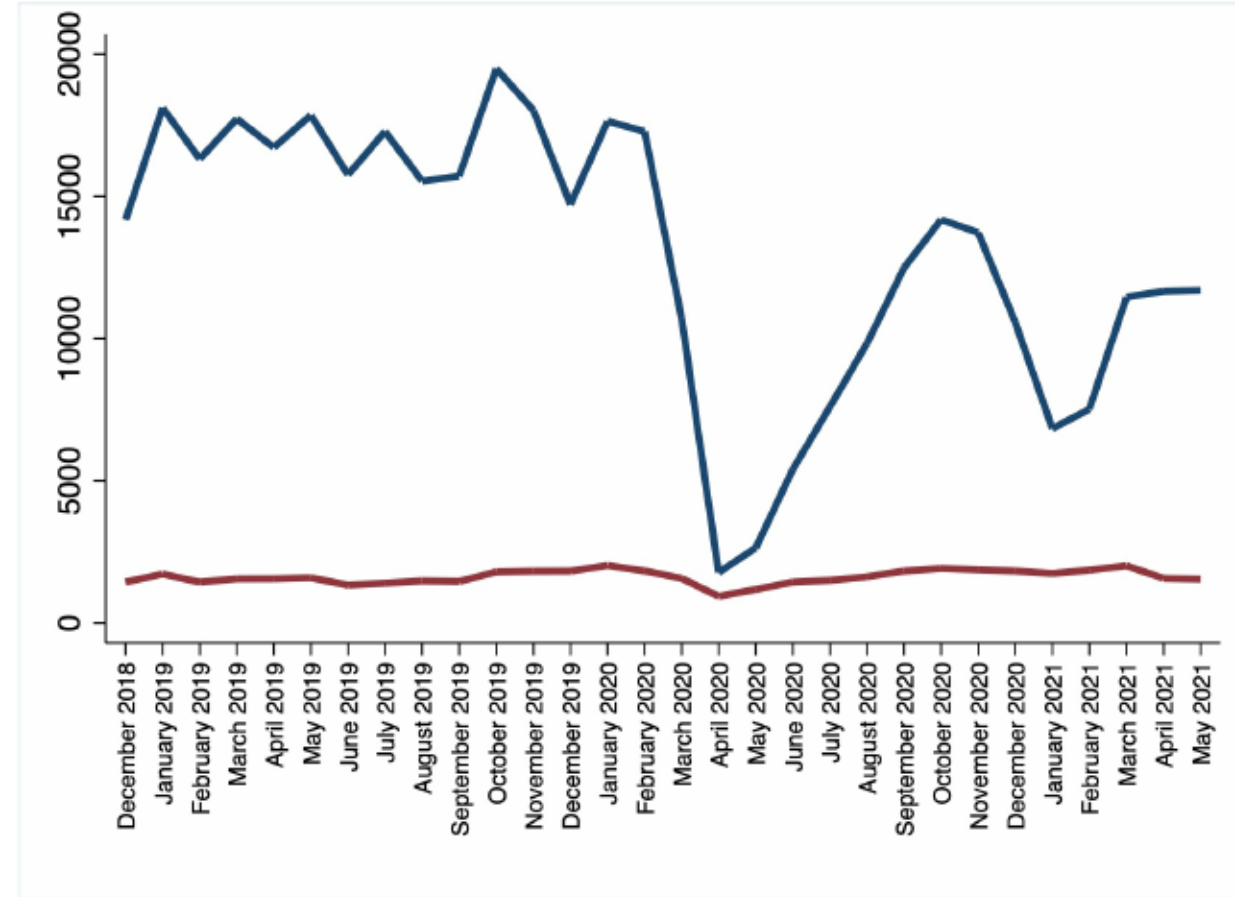


UK Logbook Dec 18 – May 21 Blue: elective, red: emergency

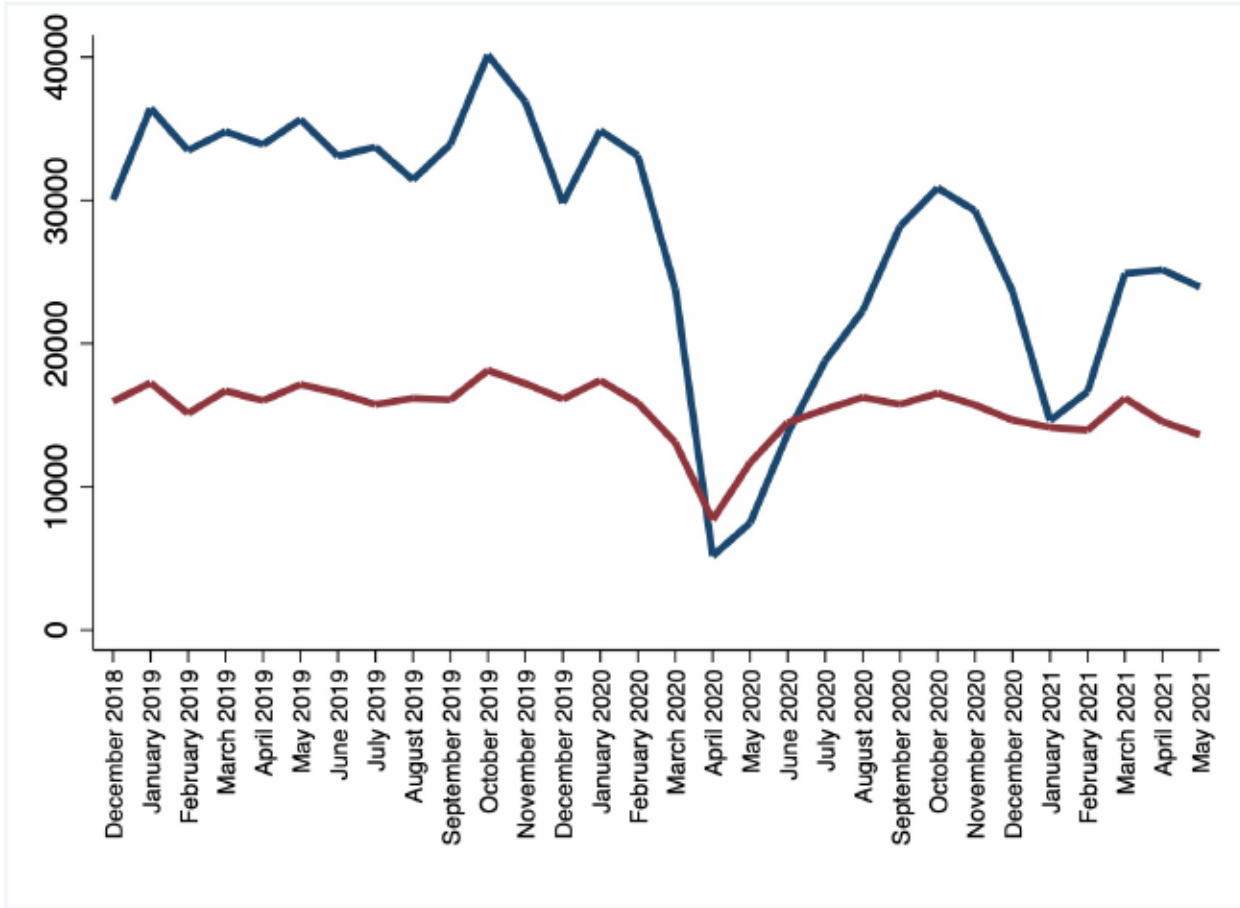
N.B. most recent month may show lower than actual figure due to lag in recording cases performed in e-logbook



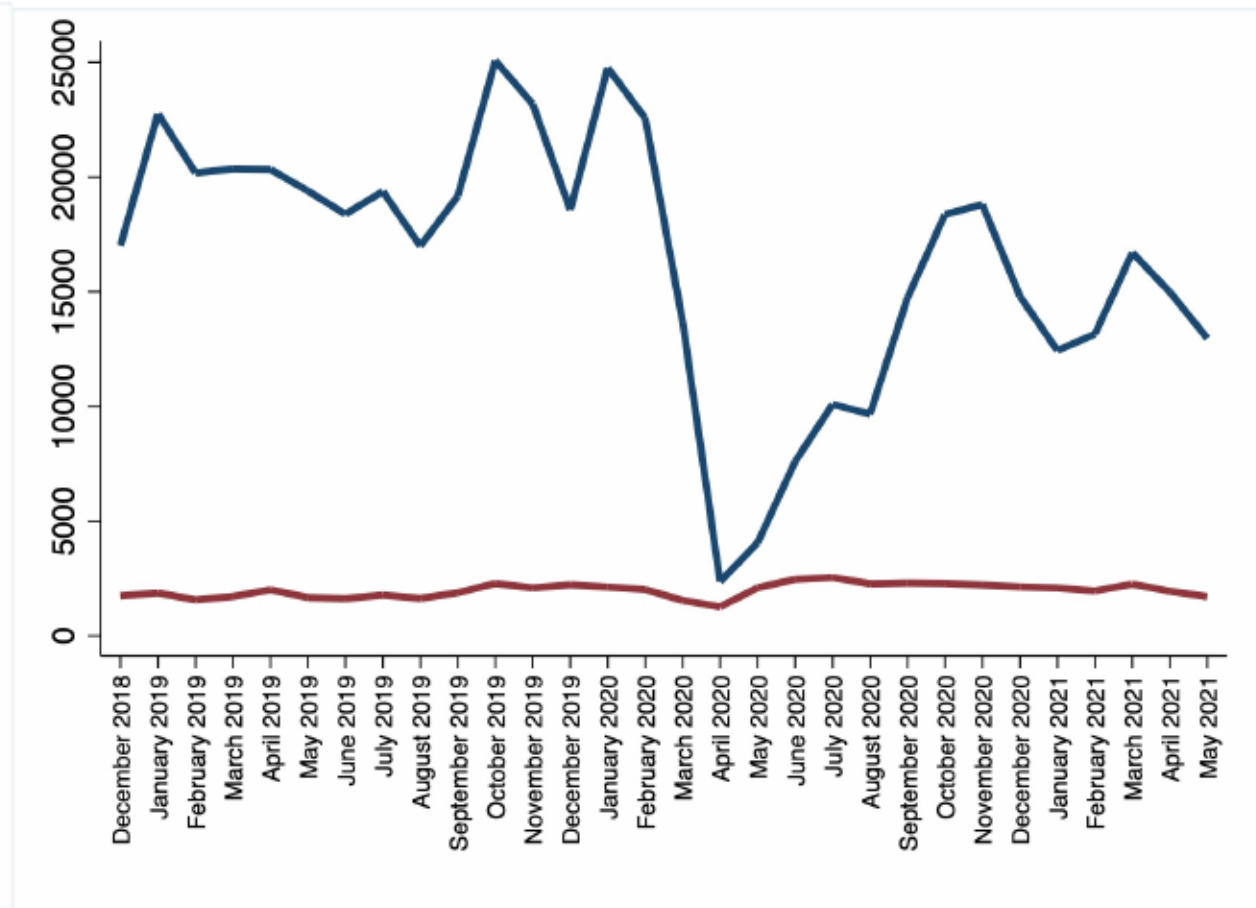
Cardiothoracics



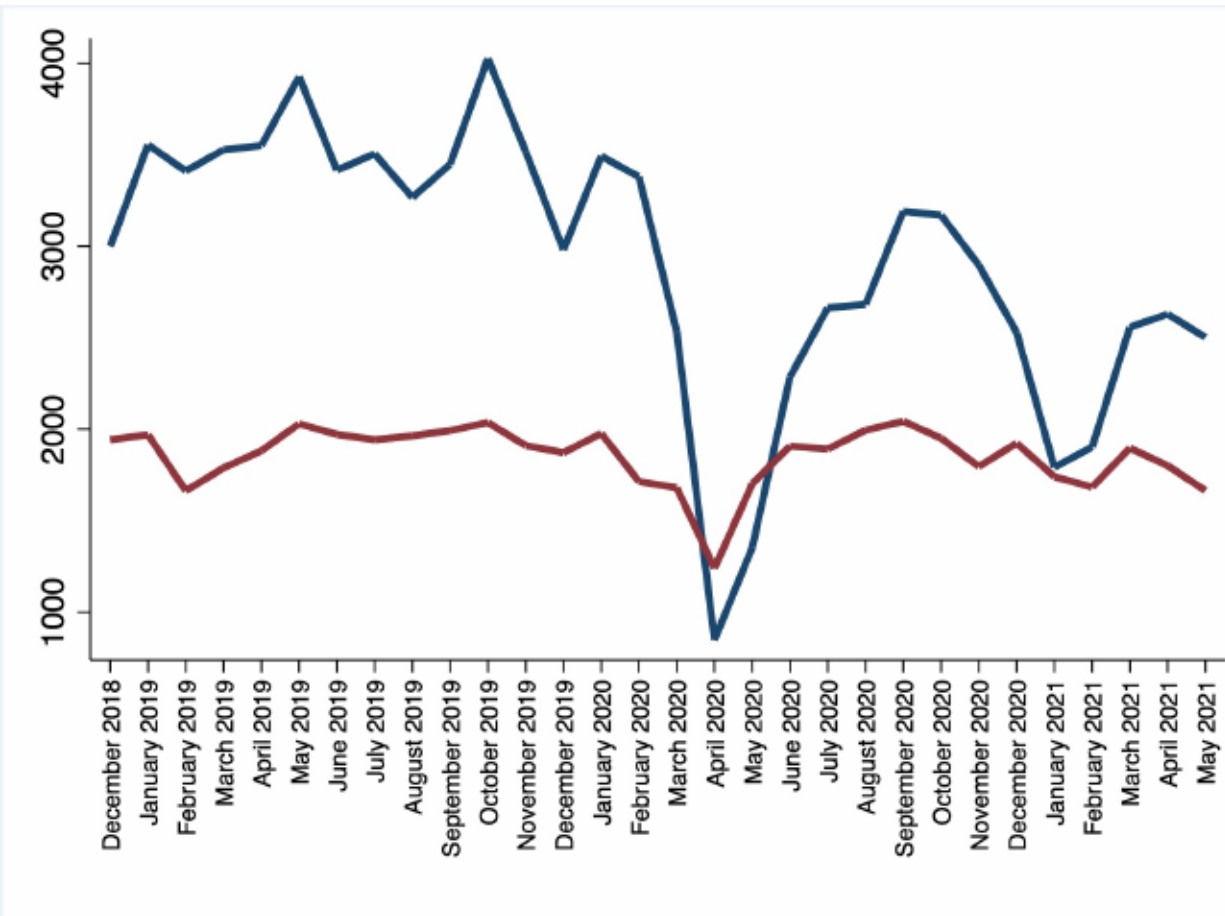
ENT



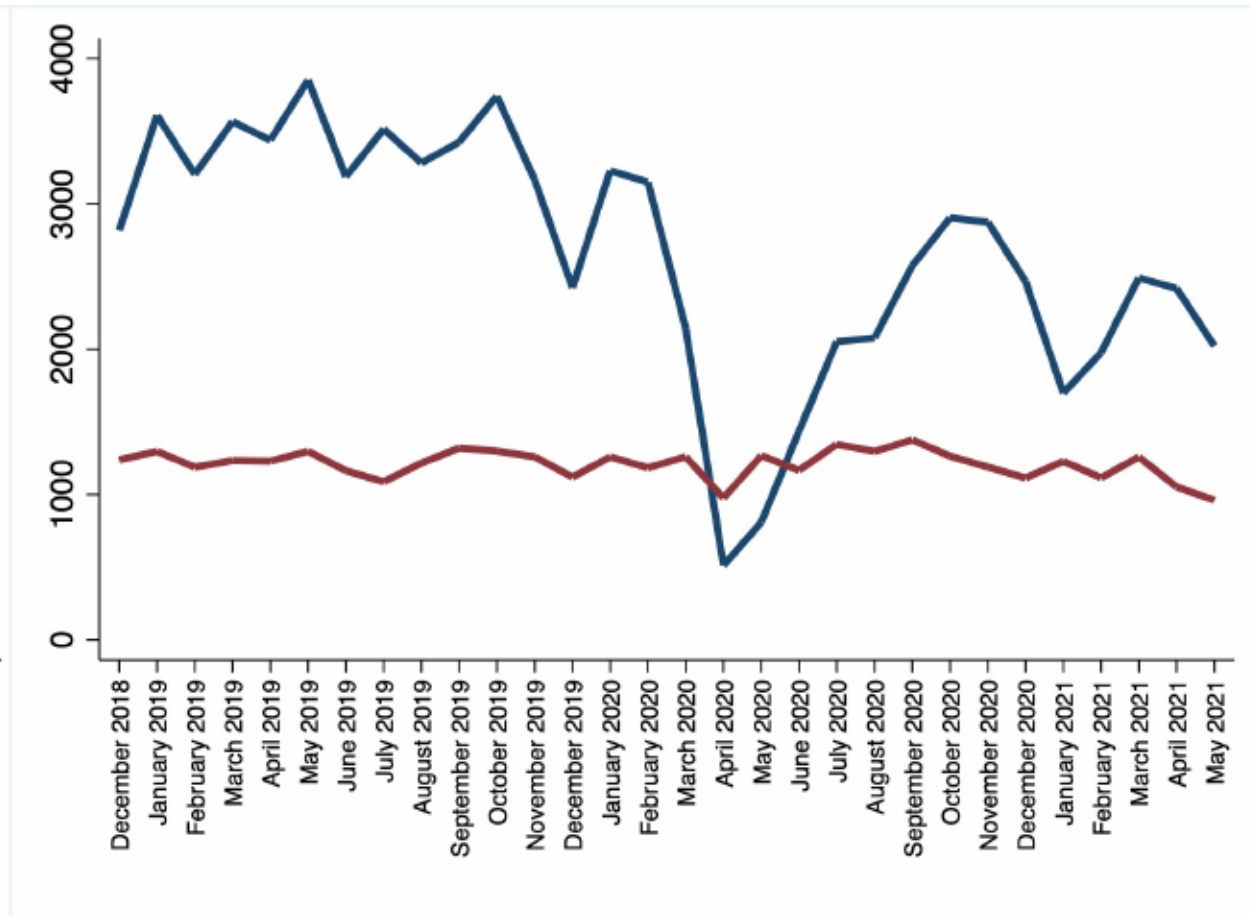
General Surgery



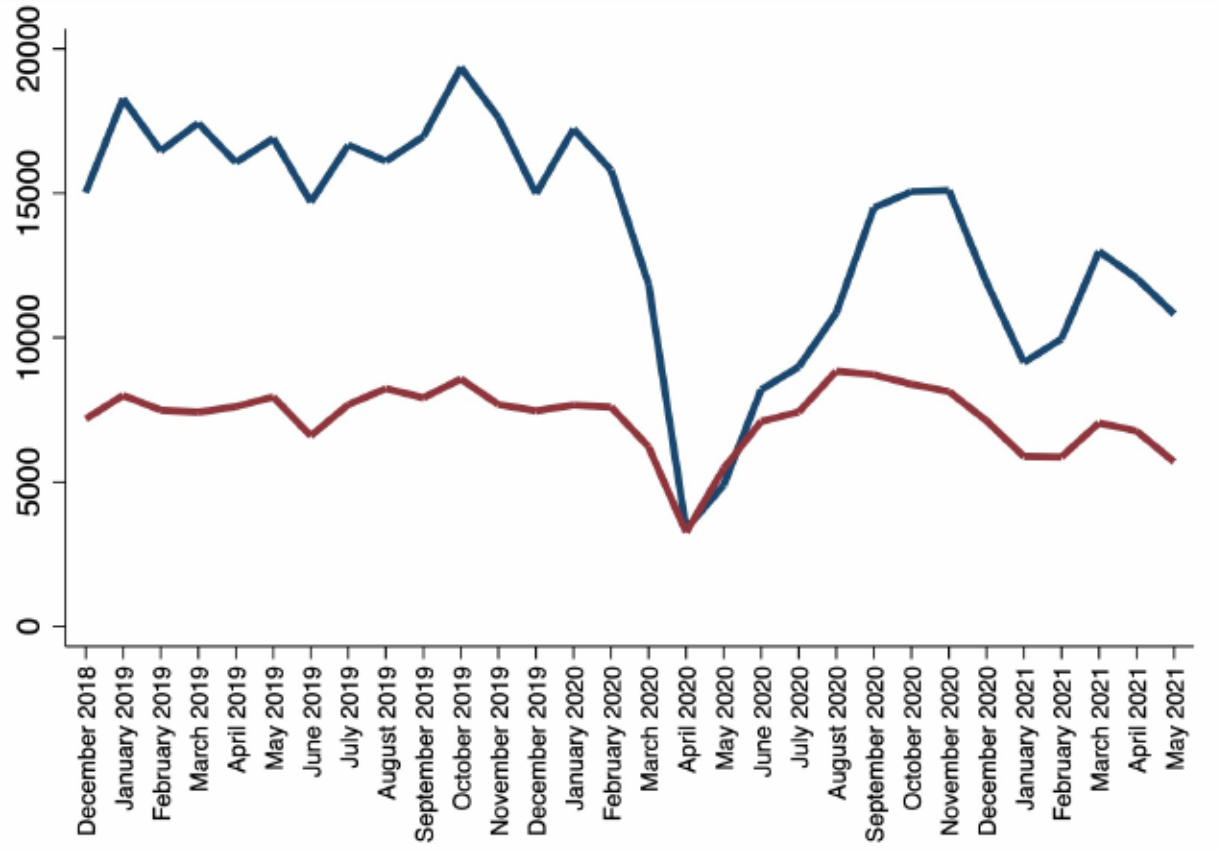
Maxillo Facial Surgery



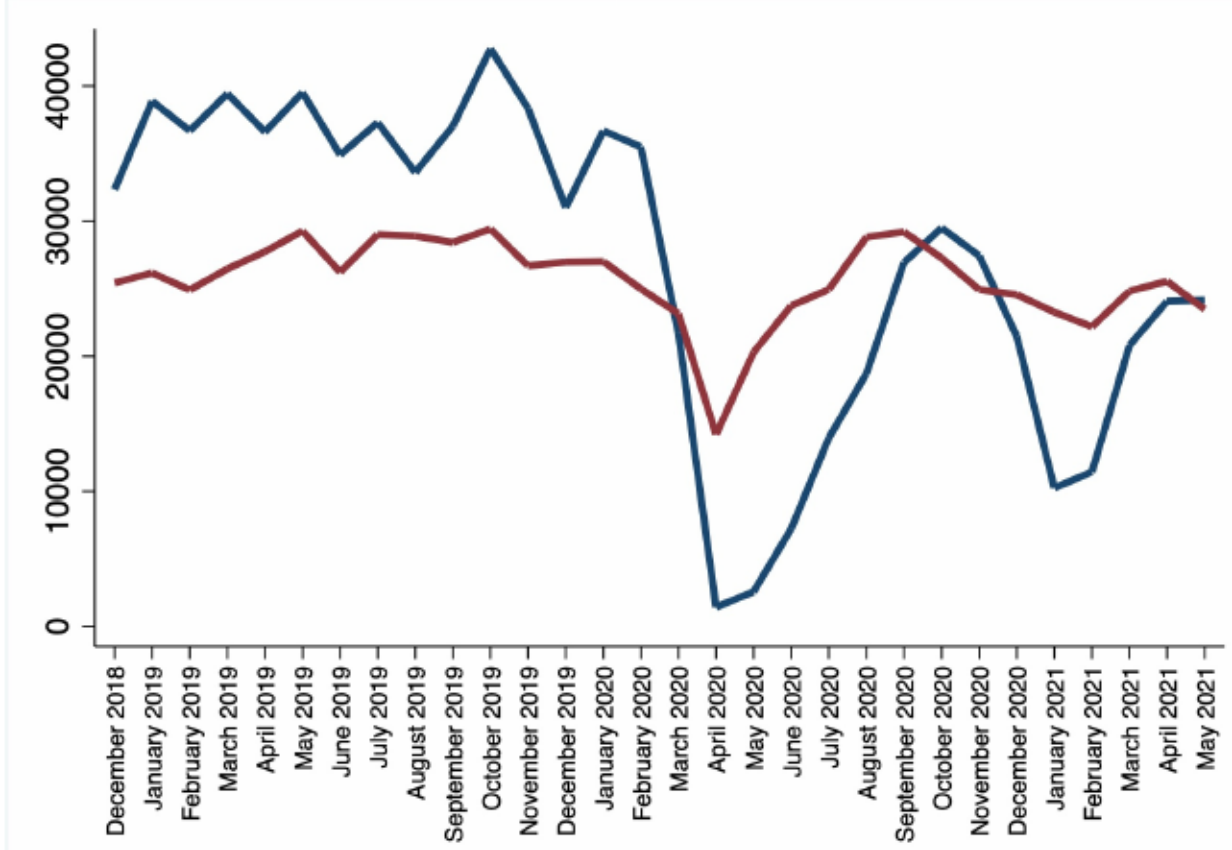
Neurosurgery



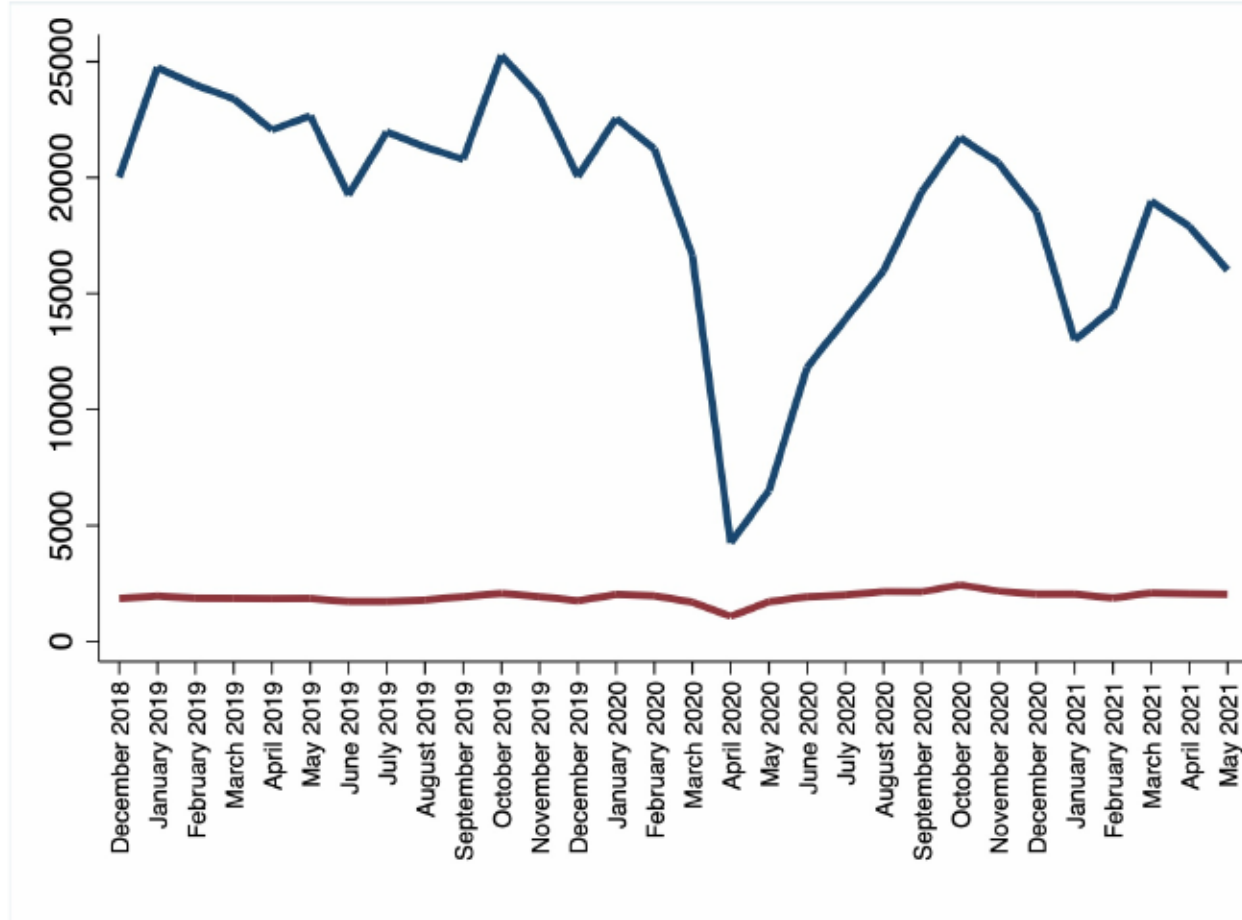
Paediatric Surgery



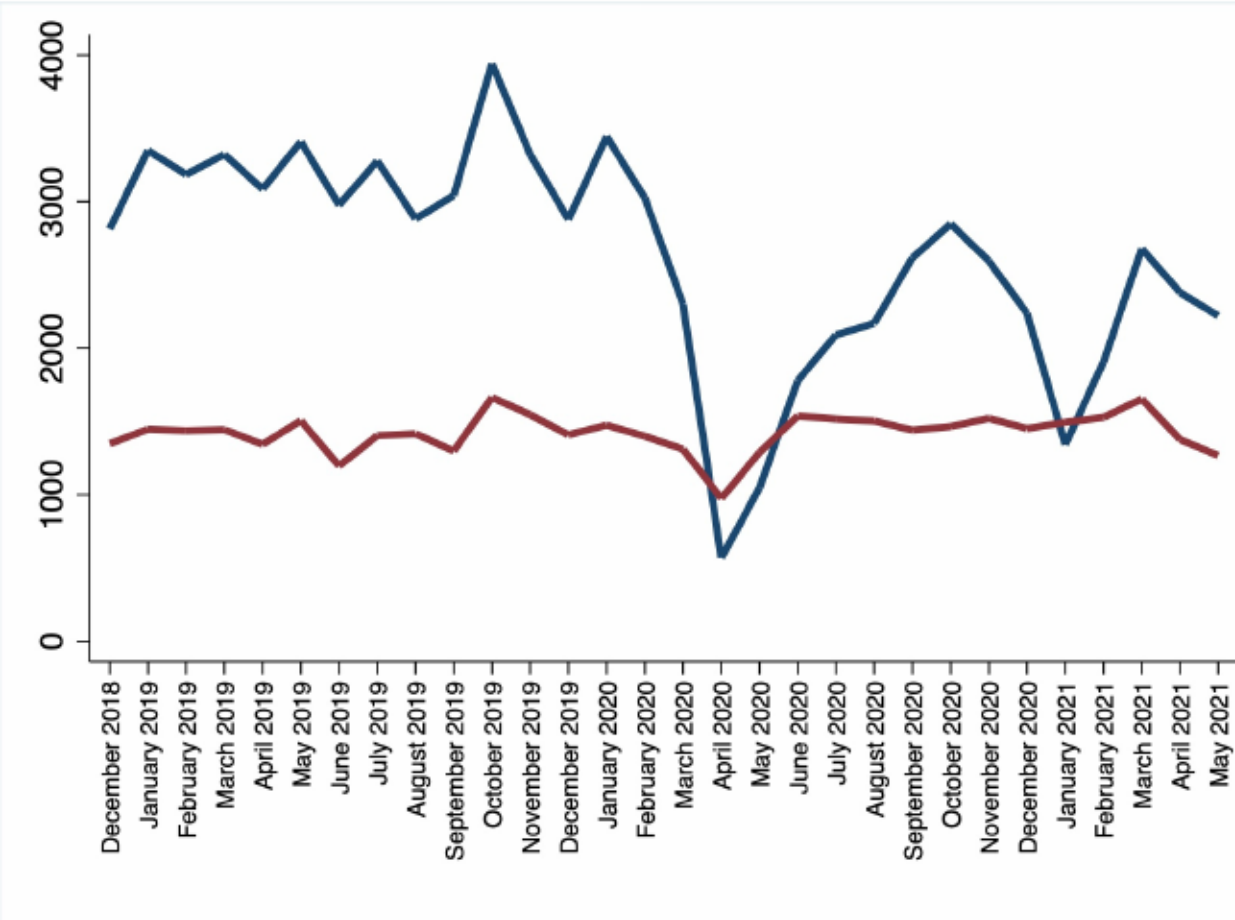
Plastic Surgery



T+O



Urology



Vascular Surgery